



# COMMERCIAL CONDENSING UNITS



LOW NOISE ▶ EASY TO INSTALL ▶ EFFICIENT



Daikin offers a full range of condensing units for commercial refrigeration in low and medium temperature applications.

Designed for outdoor use, they are a perfect solution for cold stores or freezer rooms, small food retails, restaurants, petrol station shops, etc.

## MAIN BENEFITS

- > Low operation sound level
- > Easy to install - fully equipped - packaged
- > Energy efficiency and performance
- > Robust and reliable design

## INSTALLER BENEFITS

- > Small, compact and robust for easy handling and installation in limited space
- > Fully factory tested and pre-wired electrical box for quick and easy installation and commissioning
- > Easy service thanks to very accessible components behind removable robust panels
- > Parts and support available in the complete Daikin network

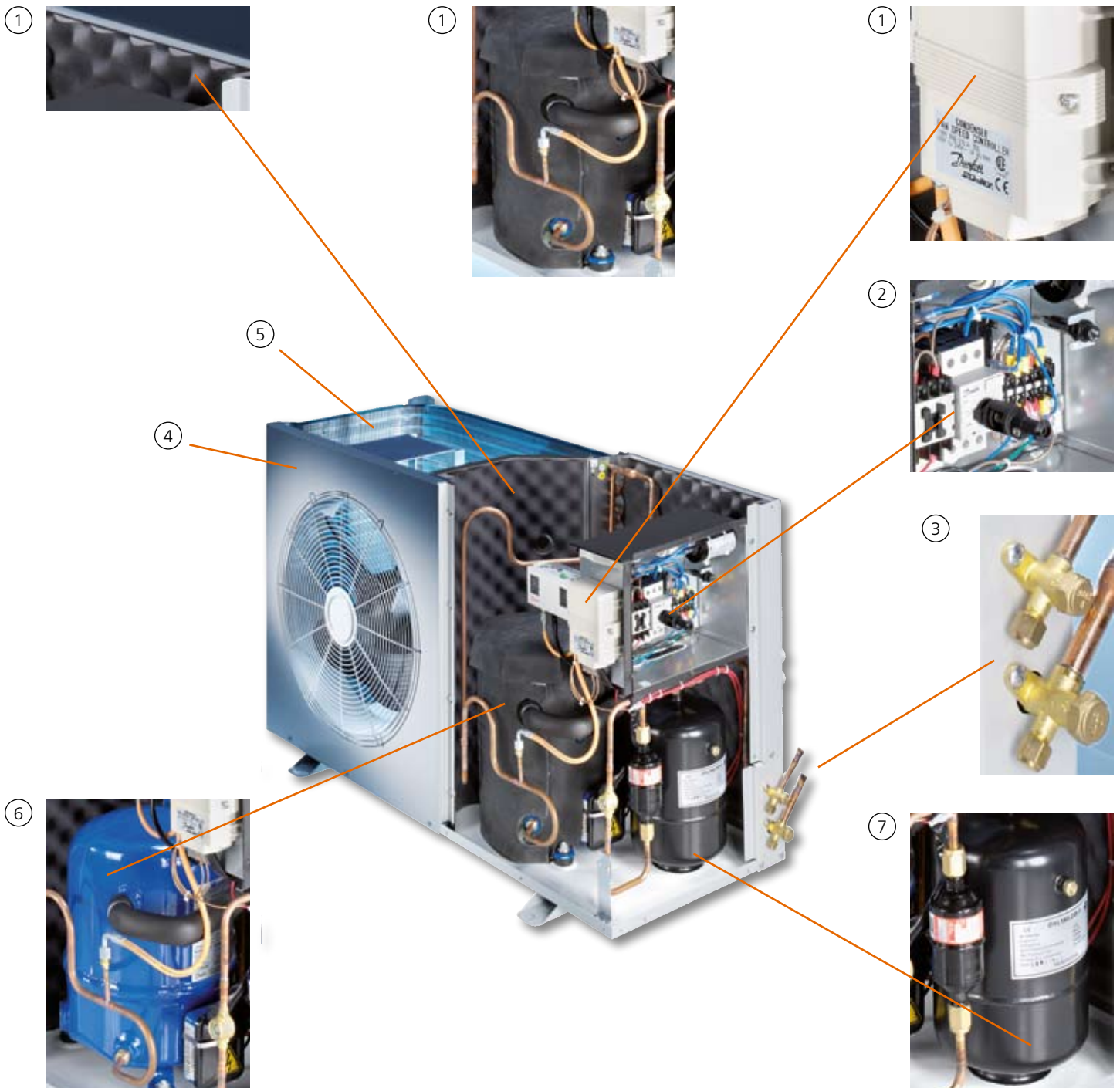
## END-USER BENEFITS

- > Very quiet operation
- > Strong anti-corrosion housing for long life, even in harsh environmental conditions
- > Dependable units, with proven component reliability and fully qualified for the most demanding applications
- > Reduced energy consumption, thanks to efficient compressors and condenser fan speed control
- > Fully packaged unit at a competitive price

# FEATURES

- ① Low sound emissions thanks to a sound proofing lining on the housing, a compressor jacket and fan speed controller (On/Off condenser fan regulation on series 1)
  - ② IP55 rated switch box, with main power switch, magnetic contactor and overload relay
  - ③ External shut off valves for quick installation and easy access and maintenance
  - ④ Weather proof housing made of epoxy powder coated steel
  - ⑤ Condenser coil with anti-corrosion treatment "blue fin"
  - ⑥ Highly reliable reciprocating compressor for medium and low temperature models with oil sight glass  
Crankcase heater
  - ⑦ Liquid receiver  
Oil separator and check valve for low temperature models\*  
Sight glass and filter drier  
Flare adapter for filter drier
- > Designed for R-404A and R-134a\* refrigerants  
> Fully factory tested and filled up with nitrogen

\* Except Series 1





MODEL	HP	TE	-45		-40		-35		-30		-25		-20		-15		-10		-5		0		
			TA	C.C(W)	P.C(W)	C.C(W)	P.C(W)	C.C(W)	P.C(W)	C.C(W)	P.C(W)	C.C(W)	P.C(W)	C.C(W)	P.C(W)	C.C(W)	P.C(W)	C.C(W)	P.C(W)	C.C(W)	P.C(W)	C.C(W)	P.C(W)
JEHCCU0050M1	0.5	27	-	-	-	-	-	-	-	-	-	-	694	492	851	530	1,037	570	1,254	611	1,500	654	
		32	-	-	-	-	-	-	-	-	-	-	-	532	509	686	548	871	590	1,085	633	1,330	679
		38	-	-	-	-	-	-	-	-	-	-	-	391	526	543	569	725	614	937	661	1,179	710
		43	-	-	-	-	-	-	-	-	-	-	-	246	542	397	587	576	634	786	683	1,026	735
JEHCCU0088M1	0.88	27	-	-	-	-	-	-	-	-	-	-	1,057	781	1,320	847	1,619	918	1,952	993	2,321	1,073	
		32	-	-	-	-	-	-	-	-	-	-	-	990	790	1,214	859	1,478	933	1,782	1,011	2,126	1,094
		38	-	-	-	-	-	-	-	-	-	-	-	868	798	1,065	871	1,302	949	1,579	1,031	1,896	1,118
		43	-	-	-	-	-	-	-	-	-	-	-	787	806	951	882	1,158	963	1,408	1,049	-	-
JEHCCU0150M1 JEHCCU0150M3	1.5	27	-	-	-	-	-	-	649	852	961	945	1,338	1,039	1,780	1,137	2,287	1,236	2,859	1,339	3,496	1,443	
		32	-	-	-	-	-	-	558	856	837	959	1,180	1,063	1,589	1,169	2,062	1,276	2,601	1,385	3,204	1,495	
		38	-	-	-	-	-	-	431	865	679	973	987	1,084	1,355	1,197	1,783	1,313	2,271	1,431	2,819	1,552	
		43	-	-	-	-	-	-	334	870	552	987	828	1,105	1,163	1,226	1,555	1,349	2,006	1,474	2,515	1,602	
JEHCCU0225M1 JEHCCU0225M3	2.25	27	-	-	-	-	-	-	1,172	1,189	1,722	1,394	2,341	1,597	3,031	1,799	3,790	1,999	4,619	2,198	5,519	2,395	
		32	-	-	-	-	-	-	977	1,196	1,490	1,409	2,074	1,621	2,727	1,831	3,451	2,041	4,244	2,249	5,108	2,457	
		38	-	-	-	-	-	-	819	1,199	1,293	1,418	1,826	1,637	2,420	1,859	3,073	2,081	3,787	2,306	4,560	2,531	
		43	-	-	-	-	-	-	649	1,204	1,087	1,429	1,583	1,656	2,135	1,886	2,743	2,120	3,408	2,355	4,131	2,592	
JEHCCU0300M1 JEHCCU0300M3	3	27	-	-	-	-	-	-	1,681	1,689	2,306	1,936	3,036	2,193	3,871	2,460	4,811	2,737	5,856	3,023	7,006	3,320	
		32	-	-	-	-	-	-	1,524	1,716	2,119	1,957	2,815	2,213	3,610	2,484	4,506	2,770	5,501	3,071	6,597	3,387	
		38	-	-	-	-	-	-	1,281	1,787	1,868	2,014	2,546	2,262	3,314	2,529	4,171	2,817	5,119	3,124	6,156	3,452	
		43	-	-	-	-	-	-	1,106	1,826	1,673	2,046	2,324	2,290	3,058	2,559	3,877	2,852	4,777	3,170	5,764	3,513	
JEHCCU0400M3	4	27	-	-	-	-	-	-	2,313	2,307	3,247	2,616	4,366	2,927	5,670	3,240	7,159	3,555	8,833	3,872	10,692	4,191	
		32	-	-	-	-	-	-	2,061	2,373	2,900	2,686	3,924	3,004	5,133	3,327	6,527	3,655	8,106	3,988	9,870	4,326	
		38	-	-	-	-	-	-	1,719	2,408	2,482	2,731	3,409	3,064	4,502	3,407	5,759	3,760	7,182	4,123	8,769	4,496	
		43	-	-	-	-	-	-	1,454	2,460	2,134	2,788	2,972	3,131	3,972	3,485	5,127	3,855	6,439	4,237	7,913	4,633	
JEHCCU0500M3	5	27	-	-	-	-	-	-	3,220	2,692	4,285	3,149	5,556	3,610	7,031	4,076	8,712	4,547	10,597	5,023	12,688	5,504	
		32	-	-	-	-	-	-	2,885	2,818	3,861	3,265	5,043	3,722	6,429	4,189	8,021	4,666	9,817	5,153	11,819	5,650	
		38	-	-	-	-	-	-	2,393	2,847	3,347	3,309	4,466	3,786	5,750	4,278	7,199	4,785	8,813	5,307	10,592	5,844	
		43	-	-	-	-	-	-	2,028	2,932	2,921	3,393	3,965	3,874	5,166	4,375	6,511	4,896	8,011	5,436	9,663	5,996	
JEHCCU0600M3	6	27	-	-	-	-	-	-	3,326	3,053	4,603	3,517	6,076	4,001	7,743	4,505	9,606	5,029	11,663	5,573	13,916	6,137	
		32	-	-	-	-	-	-	2,979	3,147	4,181	3,608	5,568	4,093	7,140	4,604	8,897	5,139	10,839	5,700	12,966	6,285	
		38	-	-	-	-	-	-	2,471	3,221	3,634	3,680	4,943	4,173	6,396	4,701	7,995	5,264	9,738	5,862	11,627	6,495	
		43	-	-	-	-	-	-	2,093	3,302	3,199	3,757	4,431	4,254	5,786	4,792	7,272	5,371	8,880	5,990	10,615	6,653	
JEHCCU0675M3	6.75	27	-	-	-	-	-	-	3,656	3,242	5,118	3,840	6,756	4,447	8,568	5,065	10,556	5,692	12,718	6,330	15,056	6,977	
		32	-	-	-	-	-	-	3,172	3,279	4,593	3,911	6,164	4,548	7,885	5,190	9,756	5,837	11,774	6,489	13,948	7,146	
		38	-	-	-	-	-	-	2,694	3,453	4,060	4,047	5,546	4,666	7,152	5,310	8,878	5,979	10,724	6,673	12,690	7,392	
		43	-	-	-	-	-	-	2,244	3,532	3,567	4,134	4,987	4,766	6,499	5,424	8,107	6,113	9,809	6,829	11,606	7,575	
JEHCCU0825M3	8.25	27	-	-	-	-	-	-	3,832	4,227	5,544	4,916	7,467	5,601	9,599	6,282	11,942	6,959	14,494	7,632	17,257	8,301	
		32	-	-	-	-	-	-	3,322	4,340	4,981	5,013	6,816	5,696	8,825	6,389	11,010	7,092	13,369	7,805	15,904	8,528	
		38	-	-	-	-	-	-	2,809	4,504	4,348	5,148	6,043	5,817	7,892	6,511	9,897	7,230	12,056	7,974	14,371	8,743	
		43	-	-	-	-	-	-	-	-	3,800	5,251	5,396	5,914	7,121	6,615	8,966	7,356	-	-	-	-	
JEHCCU1000M3	10	27	-	-	-	-	-	-	5,786	5,365	7,708	6,157	9,811	7,000	12,093	7,892	14,556	8,835	17,198	9,827	20,021	10,870	
		32	-	-	-	-	-	-	4,952	5,504	6,931	6,285	9,020	7,127	11,219	8,028	13,528	8,990	15,947	10,011	18,476	11,093	
		38	-	-	-	-	-	-	4,351	5,627	6,154	6,424	8,073	7,281	10,106	8,198	12,255	9,175	14,518	10,212	16,897	11,309	
		43	-	-	-	-	-	-	-	-	5,433	6,546	7,286	7,407	9,215	8,335	11,217	9,329	-	-	-	-	
JEHCCU0075L1	0.75	27	245	430	365	494	500	564	650	638	815	718	995	802	-	-	-	-	-	-	-	-	
		32	175	440	289	506	418	577	562	653	721	734	895	820	-	-	-	-	-	-	-	-	
		38	104	452	209	520	329	592	464	670	614	752	779	840	-	-	-	-	-	-	-	-	
		43	39	462	124	531	251	605	379	684	522	768	680	857	-	-	-	-	-	-	-	-	
JEHCCU0175L1 JEHCCU0175L3	1.75	27	455	513	738	720	1,051	937	1,394	1,164	1,767	1,401	2,170	1,648	-	-	-	-	-	-	-	-	
		32	363	551	643	756	947	971	1,277	1,196	1,631	1,431	2,011	1,676	-	-	-	-	-	-	-	-	
		38	-	-	492	793	799	995	1,132	1,212	1,489	1,444	1,872	1,691	-	-	-	-	-	-	-	-	
		43	-	-	384	827	688	1,023	1,013	1,236	1,360	1,466	1,730	1,712	-	-	-	-	-	-	-	-	
JEHCCU0225L1 JEHCCU0225L3	2.25	27	829	1,147	1,253	1,348	1,718	1,579	2,222	1,840	2,767	2,131	3,351	2,452	-	-	-	-	-	-	-	-	
		32	761	1,248	1,139	1,442	1,567	1,667	2,044	1,921	2,572	2,206	3,149	2,520	-	-	-	-	-	-	-	-	
		38	-	-	1,017	1,448	1,410	1,689	1,868	1,954	2,391	2,245	2,979	2,560	-	-	-	-	-	-	-	-	
		43	-	-	907	1,501	1,267	1,749	1,702	2,014	2,213	2,302	2,800	2,615	-	-	-	-	-	-	-	-	
JEHCCU0350L3	3.5	27	996	1,298	1,506	1,620	2,141	1,953	2,901	2,295	3,786	2,648	4,796	3,010	-	-	-	-	-	-	-	-	
		32	789	1,363	1,252	1,687	1,844	2,021	2,567	2,365	3,419	2,719	4,402	3,083	-	-	-	-	-	-	-	-	
		38	-	-	1,080	1,779	1,603	2,101	2,272	2,438	3,085	2,790	4,044	3,157	-	-	-	-	-	-	-	-	
		43	-	-	869	1,849	1,344	2,168	1,973	2,504	2,753	2,856	3,688	3,225	-	-	-	-	-	-	-	-	
JEHCCU0400L3	4	27	1,628	2,097	2,354	2,554	3,199	3,047	4,165	3,574	5,250	4,137	6,456	4,734	-	-	-	-	-	-	-	-	
		32	1,346	2,109	2,020	2,567	2,823	3,065	3,757	3,603	4,820	4,181	6,014	4,799	-	-	-	-	-	-	-	-	
		38	-	-	1,749	2,578	2,495	3,079	3,396	3,625	4,452	4,216	5,663	4,852	-	-	-	-	-	-	-	-	
		43	-	-	1,457	2,589	2,160	3,094	3,030	3,650	4,070	4,254	5,279	4,908	-	-	-	-	-	-	-	-	
JEHCCU0725L3	7.25	27	2,363	2,768	3,485	3,4																	

CAPACITY TABLE (W)

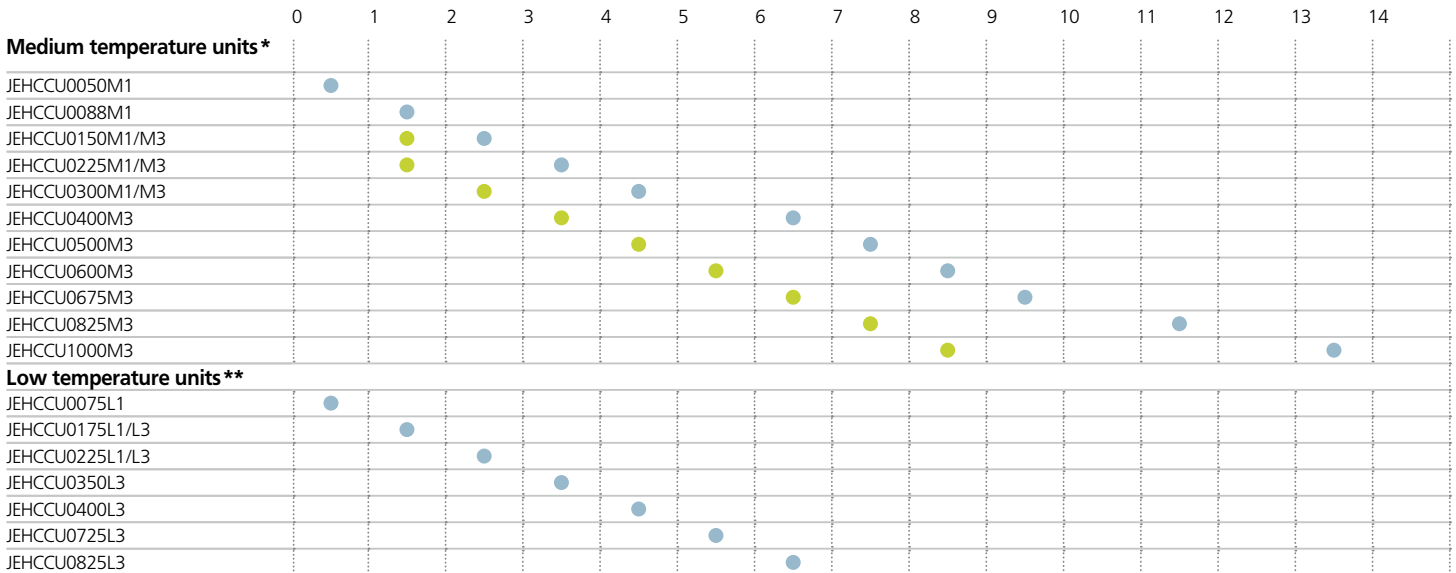
**R-134a**

MODEL	HP	TE	-15		-10		-5		0		5		10		15		
			TA	CC (W)	PC (W)	CC (W)	PC (W)	CC (W)	PC (W)	CC (W)	PC (W)	CC (W)	PC (W)	CC (W)	PC (W)	CC (W)	PC (W)
Series 2	JEHCCU0150M1	1,5	27	918	701	1,347	751	1,826	801	2,355	853	2,934	905	3,563	959	4,242	1,013
			32	842	721	1,229	775	1,671	831	2,168	889	2,720	949	3,327	1,011	3,989	1,075
			38	761	738	1,091	800	1,481	864	1,931	932	2,441	1,002	3,011	1,076	3,641	1,152
			43	700	800	1,000	800	1,300	900	1,700	1,000	2,200	1,000	2,800	1,100	3,400	1,200
	JEHCCU0225M1	2,25	27	1,547	949	2,128	1,053	2,823	1,163	3,634	1,280	4,559	1,403	5,600	1,533	6,755	1,670
			32	1,436	973	1,958	1,082	2,595	1,197	3,347	1,320	4,214	1,449	5,196	1,586	6,293	1,730
			38	1,310	1,002	1,763	1,113	2,330	1,234	3,013	1,365	3,810	1,506	4,723	1,657	5,750	1,818
			43	1,200	1,000	1,600	1,100	2,100	1,300	2,700	1,400	3,500	1,600	4,300	1,700	5,300	1,900
	JEHCCU0300M1	3	27	2,426	1,313	3,160	1,456	3,998	1,609	4,942	1,772	5,990	1,945	7,144	2,128	8,402	2,321
			32	2,279	1,353	2,948	1,510	3,721	1,677	4,600	1,854	5,583	2,041	6,672	2,238	7,865	2,445
			38	1,941	1,396	2,584	1,570	3,332	1,754	4,185	1,948	5,143	2,152	6,206	2,366	7,374	2,590
			43	1,700	1,400	2,300	1,600	3,000	1,800	3,800	2,000	4,800	2,200	5,800	2,500	7,000	2,700
Series 3	JEHCCU0400M3	4	27	3,198	1,825	4,306	1,991	5,624	2,157	7,152	2,324	8,890	2,489	10,838	2,655	12,996	2,821
			32	2,917	1,853	3,925	2,044	5,143	2,234	6,571	2,424	8,209	2,613	10,057	2,802	12,115	2,990
			38	2,593	1,877	3,482	2,097	4,582	2,317	5,891	2,535	7,411	2,753	9,140	2,969	11,080	3,185
			43	2,300	1,900	3,100	2,100	4,100	2,400	5,300	2,600	6,800	2,900	8,400	3,100	10,200	3,300
	JEHCCU0500M3	5	27	3,930	2,196	5,271	2,426	6,833	2,672	8,614	2,932	10,616	3,208	12,837	3,498	15,279	3,804
			32	3,593	2,200	4,823	2,473	6,273	2,756	7,943	3,049	9,833	3,352	11,943	3,665	14,273	3,988
			38	3,195	2,222	4,295	2,531	5,614	2,850	7,154	3,179	8,913	3,518	10,893	3,867	13,092	4,226
			43	2,900	2,200	3,900	2,600	5,100	2,900	6,500	3,300	8,200	3,700	10,000	4,000	12,100	4,400
	JEHCCU0600M3	6	27	4,594	2,398	6,092	2,658	7,814	2,947	9,762	3,267	11,934	3,616	14,332	3,996	16,954	4,405
			32	4,309	2,413	5,680	2,717	7,272	3,046	9,083	3,400	11,115	3,779	13,366	4,183	15,838	4,612
			38	3,811	2,429	5,052	2,765	6,507	3,126	8,178	3,512	10,063	3,923	12,164	4,359	14,479	4,820
			43	3,400	2,400	4,500	2,800	5,900	3,200	7,400	3,600	9,200	4,000	11,200	4,500	13,400	5,000
JEHCCU0675M3	6,75	27	5,027	2,604	6,653	2,878	8,519	3,188	10,625	3,532	12,971	3,912	15,557	4,326	18,383	4,776	
		32	4,667	2,634	6,153	2,945	7,879	3,292	9,845	3,673	12,051	4,090	14,497	4,541	17,183	5,028	
		38	4,355	2,675	5,676	3,030	7,242	3,421	9,053	3,846	11,109	4,307	13,410	4,802	15,956	5,333	
		43	4,100	2,700	5,300	3,100	6,700	3,500	8,400	4,000	10,300	4,500	12,500	5,000	14,900	5,600	
JEHCCU0825M3	8,25	27	5,800	3,188	7,728	3,549	9,922	3,929	12,380	4,330	15,104	4,750	18,092	5,191	21,346	5,651	
		32	5,322	3,261	7,083	3,662	9,110	4,083	11,401	4,524	13,958	4,985	16,779	5,466	19,866	5,967	
		38	4,796	3,313	6,349	3,775	8,172	4,252	10,265	4,744	12,628	5,251	15,261	5,773	18,164	6,310	
		43	4,400	3,400	5,800	3,900	7,400	4,400	9,300	4,900	11,500	5,500	14,000	6,000	16,800	6,600	
JEHCCU1000M3	10	27	7,256	3,647	9,494	4,152	11,993	4,687	14,751	5,252	17,770	5,847	21,048	6,472	24,587	7,127	
		32	6,615	3,686	8,667	4,237	10,980	4,818	13,552	5,429	16,385	6,070	19,477	6,741	22,830	7,442	
		38	5,875	3,685	7,701	4,304	9,792	4,947	12,148	5,616	14,769	6,309	17,655	7,028	20,806	7,771	
		43	5,300	3,700	6,900	4,400	8,800	5,100	11,000	5,800	13,400	6,500	16,200	7,300	19,100	8,000	

TE: Evaporating Temperature (°C)  
 TA: Ambient Temperature (°C)  
 C.C.: Cooling Capacity (W)  
 P.C.: Power Consumption (W)  
 Rating Condition: Superheat 10K, Sub cooling OK

PRODUCT OVERVIEW (REFRIGERATING IN KW)

● R-134a ● R-404A



\* Medium temperature units: Evaporating Temperature -10°C, Ambient Temperature 32°C  
 \*\* Low temperature units: Evaporating Temperature -30°C, Ambient Temperature 32°C



## GENERAL SPECIFICATIONS

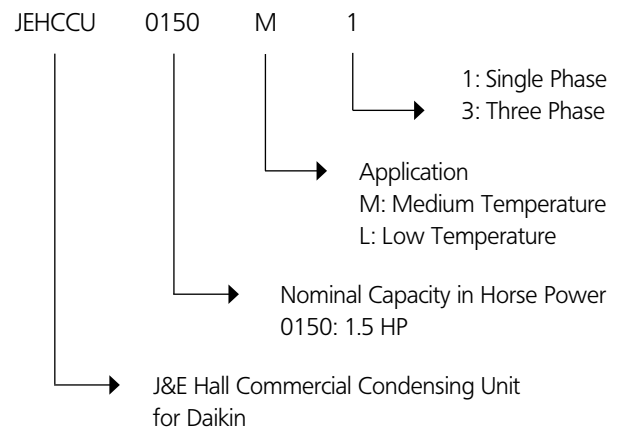
Model	Series	Compressor				Electrical Data			Condenser	Connection		Receiver volume	Weight	Sound pressure
		Type	HP	Swept volume m <sup>3</sup> /h	Oil Charge (dm <sup>3</sup> )	Power Input	Nominal Current (A)	Starting Current (A)	Airflow (m <sup>3</sup> /h)	Suction (inch)	Liquid (inch)	(Liter)	(kg)	dB(A) at 10m*
JEHCCU0050M1	1	SC10MLX	0.5	1.79	0.6	230V/1~/50Hz	3.95	22.25	1,910	3/8	1/4	1.2	46	29
JEHCCU0088M1	1	SC18MLX	0.88	3.08	0.6	230V/1~/50Hz	4.70	26.75	1,910	3/8	1/4	1.2	46	29
JEHCCU0150M1	2	MTZ18-5VM	1.5	5.26	0.95	230V/1~/50Hz	6.6	39.7	3,040	1/2	3/8	4.2	82	37
JEHCCU0150M3	2	MTZ18-4VM	1.5	5.26	0.95	400V/3~/50Hz	2.7	16.2	3,040	1/2	3/8	4.2	82	37
JEHCCU0225M1	2	MTZ28-5VM	2.25	8.29	0.95	230V/1~/50Hz	10.9	65.5	2,620	1/2	3/8	4.2	89	36
JEHCCU0225M3	2	MTZ28-4VM	2.25	8.29	0.95	400V/3~/50Hz	4.0	23.9	2,620	1/2	3/8	4.2	89	36
JEHCCU0300M1	2	MTZ36-5VM	3	10.60	0.95	230V/1~/50Hz	15.0	89.9	2,620	5/8	3/8	4.2	89	37
JEHCCU0300M3	2	MTZ36-4VM	3	10.60	0.95	400V/3~/50Hz	4.9	29.1	2,620	5/8	3/8	4.2	89	37
JEHCCU0400M3	3	MTZ50-4VM	4	12.00	1.8	400V/3~/50Hz	6.4	38.6	6,130	7/8	1/2	7.1	120	36
JEHCCU0500M3	3	MTZ64-4VM	5	18.60	1.8	400V/3~/50Hz	8.2	49.0	6,130	7/8	1/2	7.1	120	40
JEHCCU0600M3	3	MTZ72-4VM	6	21.04	1.8	400V/3~/50Hz	8.5	50.9	5,160	7/8	1/2	7.1	126	40
JEHCCU0675M3	3	MTZ81-4VM	6.75	23.63	1.8	400V/3~/50Hz	10.0	60.1	5,160	1 1/8	1/2	7.1	126	42
JEHCCU0825M3	4	MTZ100-4VM	8.25	29.80	3.9	400V/3~/50Hz	12.0	72.0	10,830	1 1/8	1/2	14	204	42
JEHCCU1000M3	4	MTZ125-4VM	10	37.50	3.9	400V/3~/50Hz	13.5	81.0	10,830	1 1/8	1/2	14	205	42
JEHCCU0075L1	1	SC18MLX	0.75	3.08	0.6	230V/1~/50Hz	4.28	24.23	1,910	3/8	1/4	1.2	46	30
JEHCCU0175L1	2	NTZ48-5VM	1.75	8.30	0.95	230V/1~/50Hz	4.4	26.5	3,040	5/8	3/8	4.2	86	35
JEHCCU0175L3	2	NTZ48-4VM	1.75	8.30	0.95	400V/3~/50Hz	2.1	12.4	3,040	5/8	3/8	4.2	86	35
JEHCCU0225L1	2	NTZ68-5VM	2.25	11.80	0.95	230V/1~/50Hz	9.2	55.1	2,620	5/8	3/8	4.2	92	38
JEHCCU0225L3	2	NTZ68-4VM	2.25	11.80	0.95	400V/3~/50Hz	3.4	20.5	2,620	5/8	3/8	4.2	92	38
JEHCCU0350L3	3	NTZ96-4VM	3.5	16.70	1.8	400V/3~/50Hz	3.3	19.6	6,130	7/8	1/2	7.1	125	38
JEHCCU0400L3	3	NTZ136-4VM	4	23.70	1.8	400V/3~/50Hz	6.1	36.5	6,130	1 1/8	1/2	7.1	125	38
JEHCCU0725L3	4	NTZ215-4VM	7.25	37.40	3.9	400V/3~/50Hz	7.5	45.1	10,830	1 1/8	1/2	14	203	41
JEHCCU0825L3	4	NTZ271-4VM	8.25	47.10	3.9	400V/3~/50Hz	9.7	58.1	10,830	1 1/8	1/2	14	203	40

\* Sound pressure level measured following ISO 3744.

## DIMENSIONS

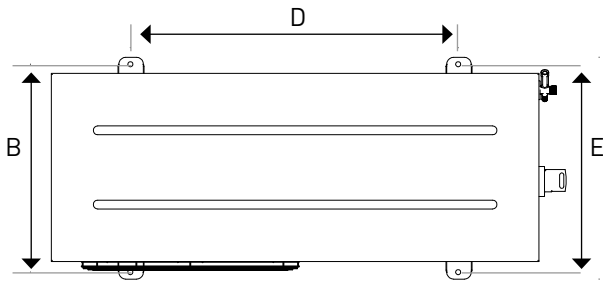
Model	Series	Dimensions			Fixing points	
		Width (mm) A	Depth (mm) B	Height (mm) C	Width (mm) D	Depth (mm) E
JEHCCU0050M1	1	865	345	485	545	400
JEHCCU0088M1	1	865	345	485	545	400
JEHCCU0150M1	2	1,109	478	649	707	448
JEHCCU0150M3	2	1,109	478	649	707	448
JEHCCU0225M1	2	1,109	478	649	707	448
JEHCCU0225M3	2	1,109	478	649	707	448
JEHCCU0300M1	2	1,109	478	649	707	448
JEHCCU0300M3	2	1,109	478	649	707	448
JEHCCU0400M3	3	1,334	530	883	946	500
JEHCCU0500M3	3	1,334	530	883	946	500
JEHCCU0600M3	3	1,334	530	883	946	500
JEHCCU0675M3	3	1,334	530	883	946	500
JEHCCU0825M3	4	1,244	510	1,431	812	560
JEHCCU1000M3	4	1,244	510	1,431	812	560
JEHCCU0075L1	1	865	345	485	545	400
JEHCCU0175L1	2	1,109	478	649	707	448
JEHCCU0175L3	2	1,109	478	649	707	448
JEHCCU0225L1	2	1,109	478	649	707	448
JEHCCU0225L3	2	1,109	478	649	707	448
JEHCCU0350L3	3	1,334	530	883	946	500
JEHCCU0400L3	3	1,334	530	883	946	500
JEHCCU0725L3	4	1,244	510	1,431	812	560
JEHCCU0825L3	4	1,244	510	1,431	812	560

## NOMENCLATURE



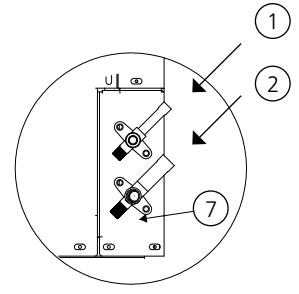
# DIMENSIONS

## SERIES 1, 2 & 3

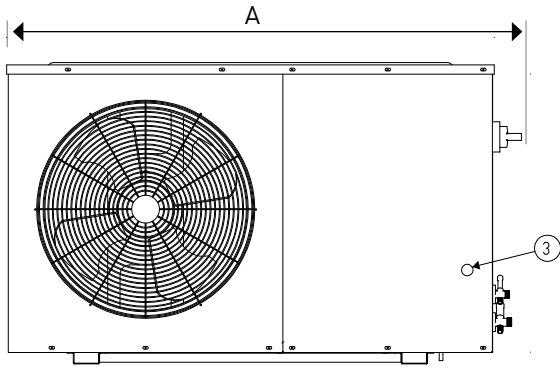


TOP VIEW

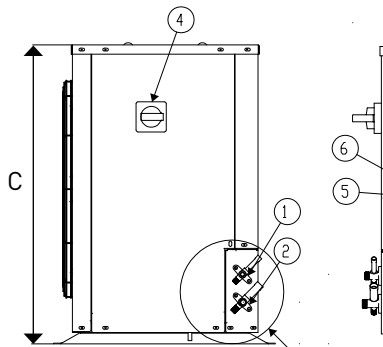
- 1 Liquid Pipe servicing valve brazing connection
- 2 Gas pipe servicing valve brazing connection
- 3 Sight glass opening (situated on the right side for series 1)
- 4 Power switch
- 5 Power cord routing opening Ø 25 (Bottom)
- 6 Power cord routing opening Ø 25 (Top)
- 7 Servicing valve plate



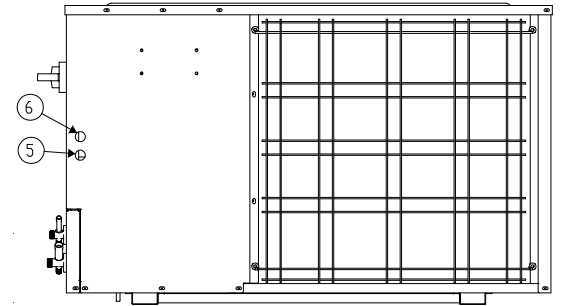
DETAIL A



FRONT VIEW

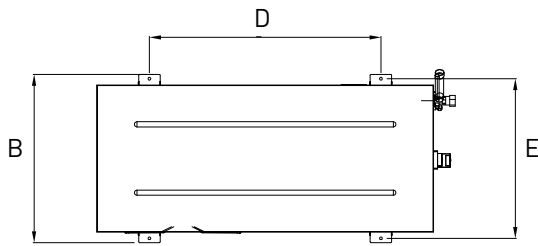


RIGHTSIDE VIEW SEE DETAIL A

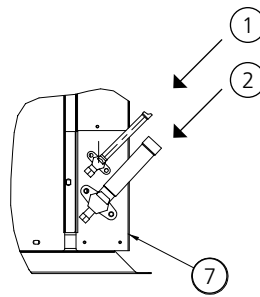


BACK VIEW

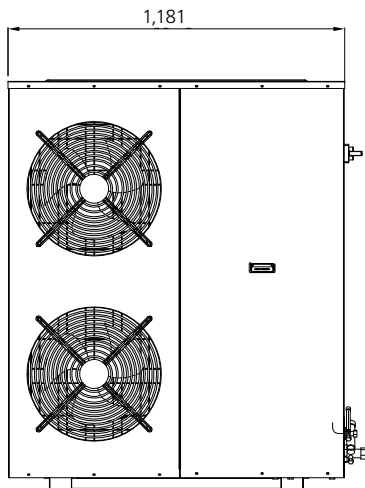
## SERIES 4



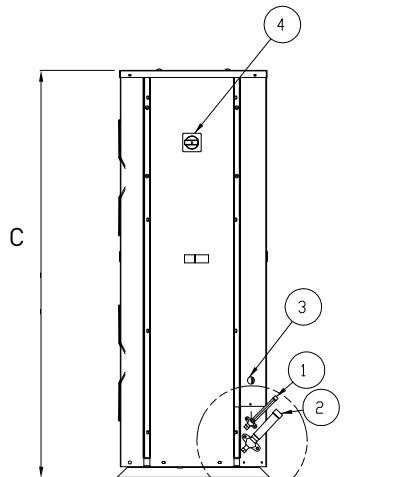
TOP VIEW



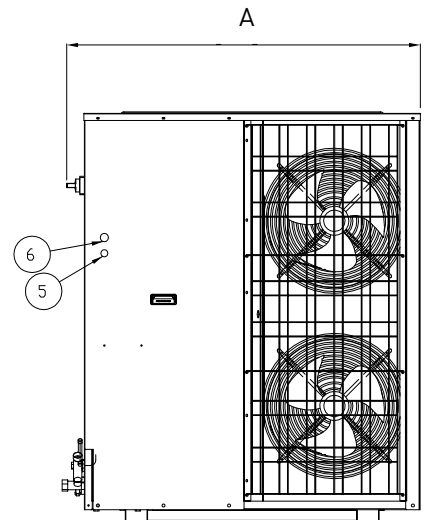
DETAIL A



FRONT VIEW



RIGHTSIDE VIEW SEE DETAIL A



BACK VIEW

DAIKIN OFFERS A WIDE RANGE OF REFRIGERATION UNITS FOR COMMERCIAL, PROFESSIONAL AND INDUSTRIAL APPLICATIONS. DAIKIN REFRIGERATION UNITS COMBINE EFFICIENCY AND RELIABILITY WITH EASY INSTALLATION AND MAINTENANCE.



ZEAS CONDENSING UNITS



CONDENSING UNITS FOR HIGH CAPACITIES



CONVENI-PACK



Daikin's unique position as a manufacturer of air conditioning equipment, compressors and refrigerants has led to its close involvement in environmental issues.

For several years Daikin has had the intention to become a leader in the provision of products that have limited impact on the environment.

This challenge demands the eco design and development of a wide range of products and an energy management system, resulting in energy conservation and a reduction of waste.



Daikin Europe N.V. is approved by LRQA for its Quality Management System in accordance with the ISO9001 standard. ISO9001 pertains to quality assurance regarding design, development, manufacturing as well as to services related to the product.



ISO14001 assures an effective environmental management system in order to help protect human health and the environment from the potential impact of our activities, products and services and to assist in maintaining and improving the quality of the environment.

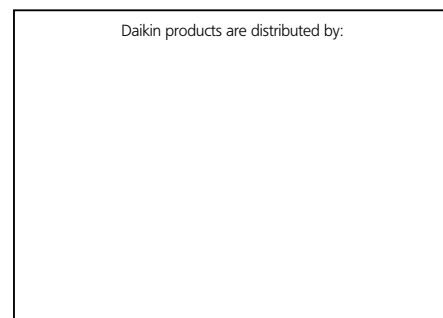


Daikin units comply with the European regulations that guarantee the safety of the product.

The present leaflet is drawn up by way of information only and does not constitute an offer binding upon Daikin Europe N.V.. Daikin Europe N.V. has compiled the content of this leaflet to the best of its knowledge. No express or implied warranty is given for the completeness, accuracy, reliability or fitness for particular purpose of its content and the products and services presented therein. Specifications are subject to change without prior notice. Daikin Europe N.V. explicitly rejects any liability for any direct or indirect damage, in the broadest sense, arising from or related to the use and/or interpretation of this leaflet. All content is copyrighted by Daikin Europe N.V.

**DAIKIN EUROPE N.V.**

Naamloze Vennoetschap  
Zandvoordestraat 300  
B-8400 Oostende, Belgium  
www.daikin.eu  
BE 0412 120 336  
RPR Oostende



ECPEN09-780A • CD • 09/09 • Copyright Daikin  
 The present publication supersedes EPEEN09-780.  
 Printed on non-chlorinated paper. Prepared by La Movida, Belgium.  
 Responsible Editor: Daikin Europe N.V., Zandvoordestraat 300, B-8400 Oostende